

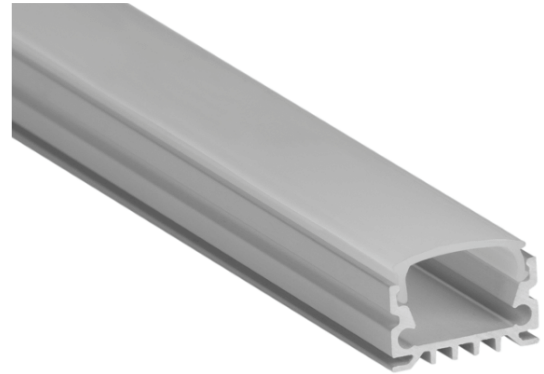
## Low-Profile Slimline LED Channel – 967 Series

The **967 Series** is a Slimline Low-Profile LED Channel compatible with **LED Strips up-to 0.63" (16mm) wide**.

This profile has a **wide range of accessories** to help you find the best fit for your application.

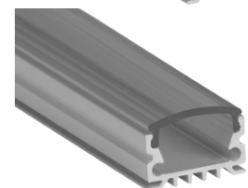
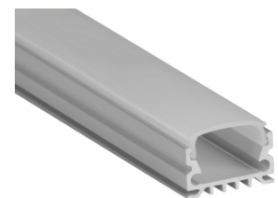
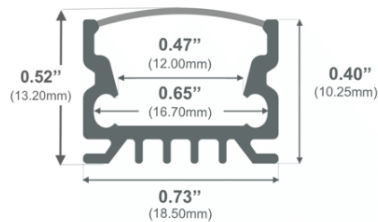
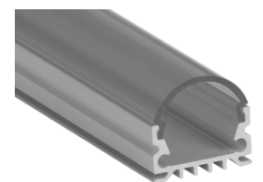
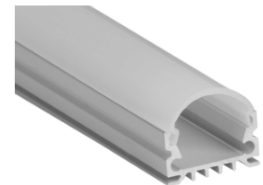
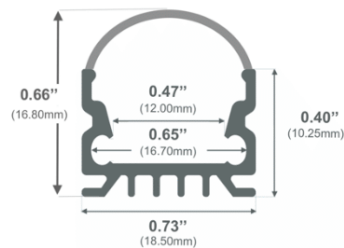
Thanks to its Heatsink design, 967 Series provides **better cooling** and helps to **extend the lifespan of your LED Strip**.

**Easy Installation** with Mounting Brackets and Snap-In Diffusers.



Type:..... **LED Channel**  
 Material:...**Aluminum 6063-T5**  
 Surface:.....**Clear Anodized**  
 Height:.....**10.25mm / 0.40"**  
 Width:.....**18.50mm / 0.73"**

**Length Availability**  
 4ft (Actual Size 47") / 1.20m  
 8ft (Actual Size 94") / 2.40m  
 10ft (Actual Size 118") / 3.00m  
 Custom Lengths **up to 3m / 10ft**



Accessories on the next page

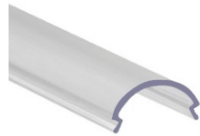


**Accessories**

**Diffuser Cover Lens**



Clear Flat Diffuser  
D21



Clear Arc Diffuser  
D22

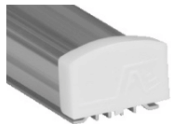


Frosted Flat Diffuser  
D23



Frosted Arc Diffuser  
D24

**End Caps**



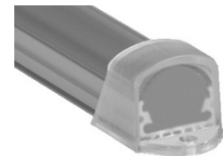
E52  
Plastic End Cap for  
Flat Diffusers  
(White or Grey)



E53  
Plastic End Cap for  
Round Diffusers  
(White or Grey)



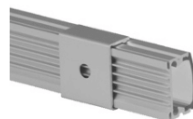
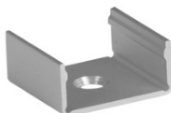
E49  
Large White Plastic  
End Cap for Round  
Diffusers



E50  
Large Frosted Plastic  
End Cap for Round  
Diffusers



**Mounting**



963-BRC  
Flat Surface Mounting Bracket