

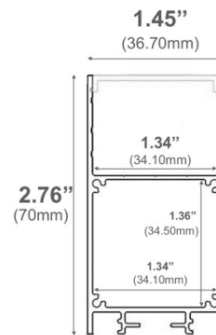
Suspended Slim Linear LED Channel - 535

The **535 Series** is a Suspended Slim LED Aluminum Channel for architectural applications with a surface area that supports **LED lighting sources up-to 30mm (1.18") wide**.

It offers an **internal housing space for slim LED Drivers** and can be used in **Suspended and Surface Mount** applications.



Type:.....**LED Channel**
Material:....**Aluminum 6063-T5**
Surface:.....**Clear Anodized**
Height:.....**70.00mm / 2.76"**
Width:.....**36.70mm / 1.45"**



Length Availability

4ft (Actual Size 47") / 1.20m
8ft (Actual Size 94") / 2.40m
10ft (Actual Size 118") / 3.00m
Custom Lengths **up to 3m / 10ft**



Accessories on the next page

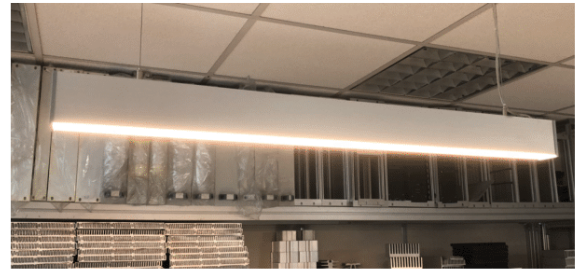


Accessories

Diffuser Cover Lens



Frosted Diffuser
D32



End Caps




Plastic End Cap

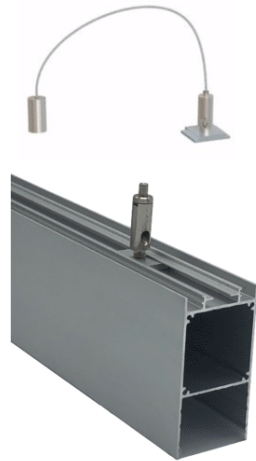


Metal End Cap



Mounting on the next page 

Mounting



Suspension Kit

(Includes 2 steel wires of 1.5m/4.92ft and connection parts)



Surface Mount Clips

