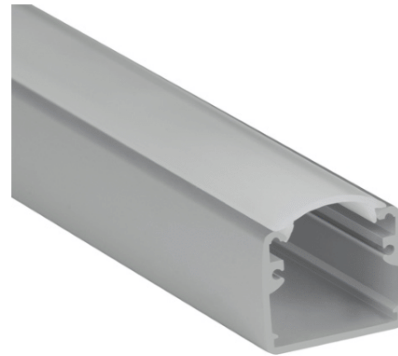


Square LED Channel - 411

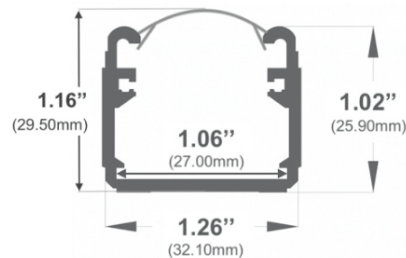
The **411 Series** is a square-shaped LED Aluminum Channel compatible with **LED Strips up-to 1.00" (25.4mm) wide**.

Thanks to its design, it offers best-in-class performance for high-output and **Hotspot-Free (Dotless)** LED lighting applications.

LED Channels provides **better cooling** and helps to **extend the lifespan of your LED Strip**.



Type:.....**LED Channel**
 Material:...**Aluminum 6063-T5**
 Surface:.....**Clear Anodized**
 Height:.....**25.90mm / 1.02"**
 Height w/Lens. **29.50mm / 1.16"**
 Width:.....**32.10mm / 1.26"**



Length Availability

4ft (Actual Size 47") / 1.20m
 8ft (Actual Size 94") / 2.40m
 10ft (Actual Size 118") / 3.00m
 Custom Lengths **up to 3m / 10ft**

Accessories

Diffuser Cover Lens and End Caps



Frosted Diffuser (Snap-In)
411ASL-DF-01



Metals End Caps
411ASL-EC-19M